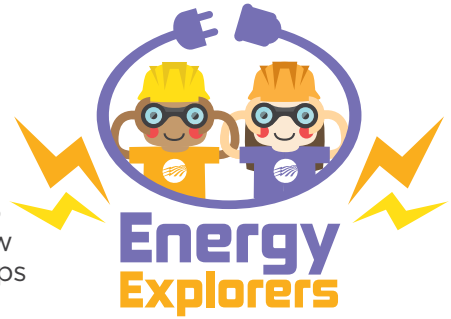


# THE STEPS TO RESTORING POWER

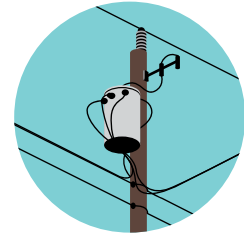
When the power goes out, line crews work hard to restore electricity as quickly and safely as possible. To ensure the process is done efficiently, line crews follow specific steps to restore power. Can you order the steps below to match how power is restored?

*Hint: Check your work in the answer key.*



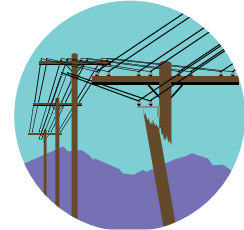
STEP #

**Tap lines** are inspected. These lines deliver power to transformers that are either mounted on utility poles or placed on pads for underground electric service.



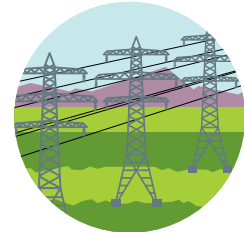
STEP #

**Distribution power lines** are inspected. These are the lines you typically see on the side of the road that deliver power to communities.



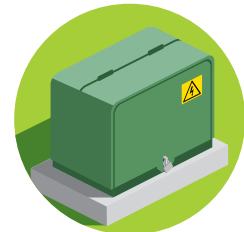
STEP #

**Large, high-voltage transmission lines** are inspected for damage. These power lines deliver large amounts of electricity over great distances.



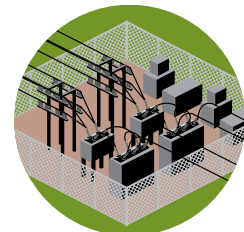
STEP #

**Service lines** are inspected. These are the power lines that run **between the transformer and your home.**



STEP #

**Distribution substations** are inspected. These facilities lower the voltage of power, then send power to distribution lines.



Answer Key: 4, 3, 1, 5, 2